



Study
Tools

SPI Test Prep from SonoSim

Ensure Student Success

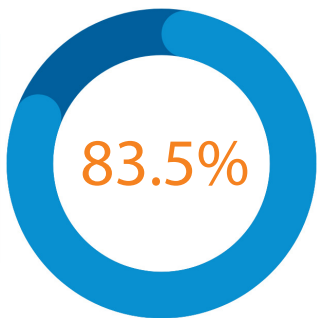
Crucial for gaining ARDMS certification, passing the SPI exam is a significant milestone for both students and DMS program accreditation. Learners come from diverse educational backgrounds and need test preparation that accommodates varying levels of baseline knowledge, learning styles, and comprehension strengths. Today's learners prefer a blend of learning modalities, a preference the SonoSim Ecosystem adeptly fills.

Key Elements of SonoSim SPI Test Prep

- ✓ Exam Simulator: Unlimited Mock Exams
- ✓ Interactive Quizzes: Focused practice on areas that need improvement
- ✓ Anytime, Anywhere Access: Give learners unlimited access and practice on any device
- ✓ Over 1,500 questions, all meticulously mapped to comprehensively cover all aspects of the latest SPI Test requirements (9/1/23 ARDMS Update)
- ✓ Peer-Reviewed: A rigorous peer-review process involves subject matter experts, including medical biophysicists and ARDMS-certified sonographers

Learner's Love it!

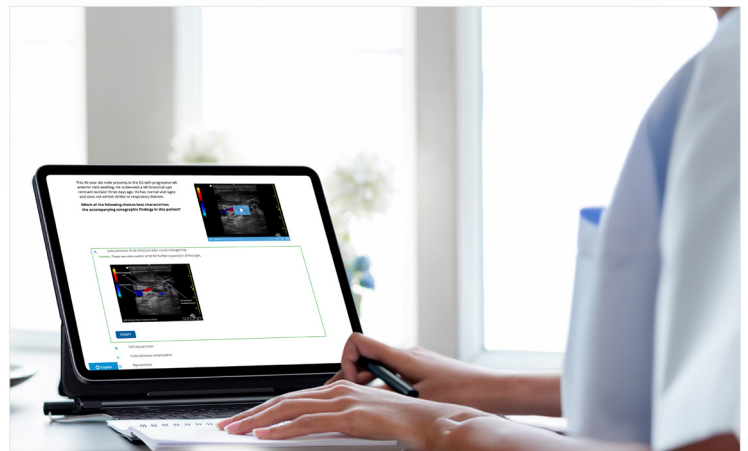
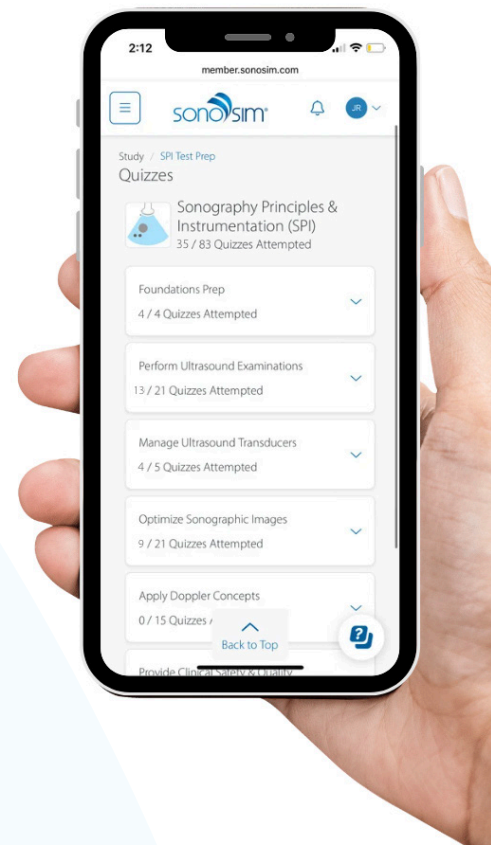
Since its launch less than one year ago, SonoSim SPI Test Prep has received an overwhelming response, with over 56,000 quizzes taken. The expansion from 800 to over 1,500 questions is a direct response to user demand, underscoring SonoSim's commitment to meeting sonography learners' needs.



Positive Feedback!

~84% of DMS students saw a positive impact on test preparation.

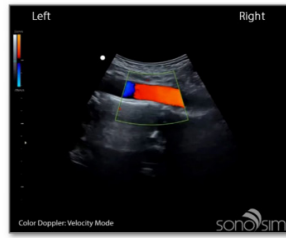
"The SPI Quizzes were my main source of practice and studying for my exam and I know that's why I passed!"



SPI Test Prep from SonoSim

Help Learners Pass the First Time

Which of the following statements best characterizes the direction of flow in the accompanying color flow Doppler (CFD) ultrasound image of this vessel?



- A. There is no way to discern direction of blood flow using this image.
- B. There is no forward flow within this segment of the vessel.
- C. Blood is flowing from the right to left side of this image of a vessel.
- D. Blood is flowing from the left to right side of this image of a vessel.

Correct ✓

Correct. Given the color scale provided, blood flow moving towards the transducer (top of scale) is depicted in red and blood moving away from the transducer (bottom of scale) is depicted in blue. Therefore, we know blood in the vessel is flowing from the right to the left side of this image.

NEXT QUESTION

1,500+ Expert Peer-Reviewed Questions

Our SPI Test Prep Questions were developed by experts based on multiple textbooks, and peer-reviewed. Each quiz question includes explanations for wrong answers to help learners improve each time they make an attempt.

Design & Content

2023 ARDMS Content Outline Percentages

Domain Number	Domain	Percentage
1	Performance Ultrasound Examinations	23%
2	Manage Ultrasound Transducers	7%
3	Optimize Sonographic Images	26%
4	Apply Doppler Concepts	34%
5	Provide Clinical Safety & Quality Assurance	10%

SonoSim SPI Mock Exam } ✓ 110 Questions
 ✓ 2-Hour Time Limit

Users have access to attempt mock exam attempts. Mock exams are timed and weighted to match the ARDMS SPI certification exam structure.

Performance Tracking & Feedback

The system offers individual and group performance tracking, enabling learners and educators to monitor progress and identify areas for improvement.

Learner Status Report

On Track 11 | Almost There 0 | Struggling 14

Learner	Domain			
	CLINICAL SAFETY, PATIENT CARE, & QUALITY ASSURANCE	ULTRASOUND TRANSDUCERS	IMAGING PRINCIPLES & INSTRUMENTATION	DOPPLER IMAGING CONCEPTS
Luis Learner	84% (91% above class)	91% (91% above class)	79%	71%
Li Learner	94%	90%	88%	80%
Lily Learner	90%	93%	72%	90%
Liam Learner	77%	65%	83%	89%
Luke Learner	68%	78%	80%	90%
Lisa Learner	79%	78%	77%	74%
Lamar Learner	97%	96%	99%	94%

Average score 90%
7 of 12 quizzes attempted

Back to Top